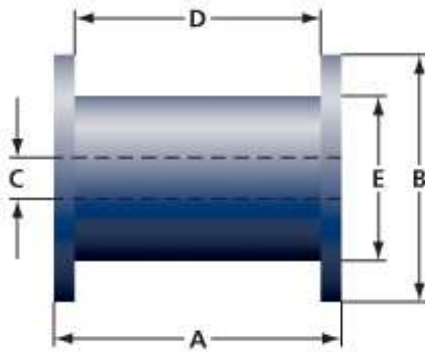


Reel Specification

DIN355

Version 2

| Code | Length (A) mm | Width (B) mm | Bore (C) mm | Traverse (D) mm | Barrel (E) mm | Fill weight per reel kg |
|----------------|---------------|--------------|-------------|-----------------|---------------|-------------------------|
| DIN 355 | 200 | 355 | 35 | 160 | 224 | 45kg |



Other standard reels available

| Code | Length (A) mm | Width (B) mm | Bore (C) mm | Traverse (D) mm | Barrel (E) mm | Fill weight per reel kg |
|---------|---------------|--------------|-------------|-----------------|---------------|-------------------------|
| DIN 100 | 100 | 100 | 16 | 80 | 63 | 1kg |
| DIN 125 | 125 | 125 | 16 | 100 | 80 | 3.5kg |
| DIN 160 | 160 | 160 | 22 | 128 | 100 | 7kg |
| DIN 200 | 200 | 200 | 22 | 160 | 125 | 12kg |
| SD200K | 55 | 200 | 52 | 45 | 105 | 7kg |
| DIN 250 | 200 | 250 | 22 / 35 | 160 | 160 | 23kg |
| DIN 300 | 103 | 300 | 52 | 91 | 212 | 15kg |
| DIN 500 | 250 | 500 | 35 | 180 | 315 | 90kg |
| DIN 560 | 380 | 560 | 127 | 320 | 280 | 250kg |
| DIN 630 | 430 | 630 | 127 | 380 | 280 | 450kg |

Wire is available in drum packs and a variety of reel and coil sizes according to customer requirements. Other reels available on request.



Chaplin Bros. (Birmingham) Limited
Reddicap Trading Estate
Sutton Coldfield
West Midlands
B75 7BU, England

Tel: +44(0)121 378 0565
Email: sales@chaplinwire.com
www.chaplinwire.com

